



Three-phase ship transformers
with the power range between 10 kVA and 1600 kVA 50 Hz

ET3SM

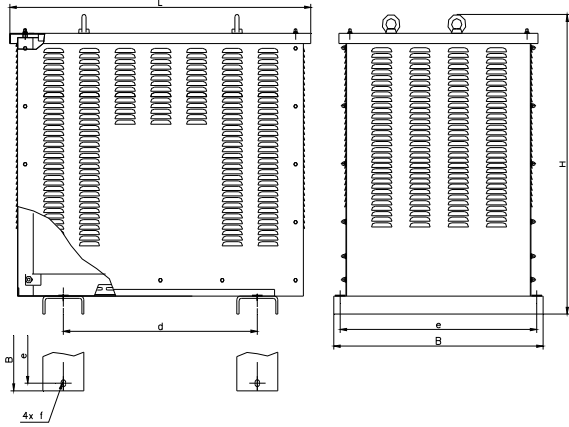


Fig. 1

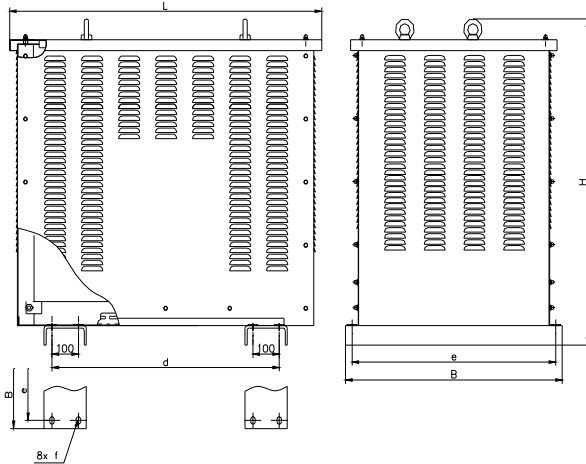


Fig. 2



Technical data:	
Design	Transformers are manufactured in the maritime version C2/E2. They are manufactured as per EN 60726, EN 61558 and in accordance with the GL, PRS, RMRS, RINA, BV, LR, DNV and ABS rules, depending upon the requirements stipulated in a purchase order.
Insulation class	H(180°C)
Climatic class / environmental class	C2/E1 - maritime design
Ambient temperature	45°C
Protection degree	IP 23
Frequency	50 Hz
Primary voltage	up to 1000 V (as per agreement)
Secondary voltage	up to 1000 V (as per agreement)
Terminals	screw terminal blocks or copper bus bars
Fastening	by means of angles
Cooling	AN, air, natural
Arrangement	vertical

Three-phase ship transformers are assigned for supplying control and lighting circuits. In standard design they are assembled in an enclosure made of steel sheet with the protection degree of IP 23. The casing structure enables its quick disassembly and easy access to winding tappings. The main cables are directed through the bottom. The casings are powder painted in colour RAL 7032 (or other upon request).

Technical data of three-phase ship transformers type ET3SM

Type	Power [kVA]	Enclosure type	L [mm]	B _{max} [mm]	H [mm]	d [mm]	e [mm]	f [mm]	Fig	Fixing screws	Weight [kg]
ET3SM - 10	10	BG23 - E350P3	620	520	620	370	470	11 x 15	1	4 x M 10	120
ET3SM - 15	15										140
ET3SM - 16	16										140
ET3SM - 20	20	BG23 - E400P3	660	570	710	430	525	13 x 18	1	4 x M 12	155
ET3SM - 25	25										180
ET3SM - 30	30										200
ET3SM - 40	40	BG23 - E440P3	720	630	785	490	585	13 x 18	1	4 x M 12	240
ET3SM - 50	50										280
ET3SM - 63	63										325
ET3SM - 100	100	BG23 - E550P3	870	705	845	590	660	13 x 18	1	4 x M 12	430
ET3SM - 115	115										495
ET3SM - 120	120										520
ET3SM - 125	125	BG23 - E580P3	980	780	970	620	730	17 x 25	1	4 x M 16	540
ET3SM - 130	130										620
ET3SM - 150	150										650
ET3SM - 160	160	BG23 - E700P3	1180	820	1100	600 / 800	770	17 x 25	2	8 x M 16	760
ET3SM - 200	200										950
ET3SM - 225	225	BG23 - E785P3	1280	1000	1310	660 / 860	950	Ø22	2	8 x M 20	1000
ET3SM - 250	250										1050
ET3SM - ***	up to 1600	DIMENSIONS AND ENCLOSURE TYPE ARE THE SUBJECT OF MUTUAL AGREEMENT									

Note:

Manufacturer reserves the right to make changes resulting from the continuous development of products offered.
If requested in advance, it is possible to manufacture transformer in other version.
The transformers may be delivered with approvals issued by qualification societies: GL, LR, PRS, BV, RMRS, RINA, DNV, ABS, GOST.

Manufacturer: **ELHAND TRANSFORMATORY Sp. z o.o.**
PL 42-700 Lubliniec, ul. Klonowa 60
tel.: (34) 34 73 100, fax: (34) 34 70 207
<http://www.elhand.pl> e-mail: info@elhand.pl



ET/2016/1/19